

### TEST DATA

| ITEM  | SPEC         | SAMPLE   |       |       |    |   |   |   |   |   |    |
|---|--------------|----------|-------|-------|----|---|---|---|---|---|----|
|   |              | 1        | 2     | 3     | 4  | 5 | 6 | 7 | 8 | 9 | 10 |
| Primary Exciting Current<br>Input 120 VAC , 60 Hz | 45 mA<br>max | 22       | 25    | 23    |    |   |   |   |   |   |    |
| Primary Load Current<br>Input 120 VAC , 60 Hz     | 65 mA<br>max | 53       | 52    | 52    |    |   |   |   |   |   |    |
| Secondary No Load<br>DC Voltage                   | 15.5V<br>±5% | 15.4     | 15.38 | 15.34 |    |   |   |   |   |   |    |
| Secondary DC Voltage<br>Load 300 mA               | 9V<br>±5%    | 8.87     | 8.92  | 8.84  |    |   |   |   |   |   |    |
| Secondary Voltage<br>Load mA                      | V<br>± %     |          |       |       |    |   |   |   |   |   |    |
| Secondary Voltage<br>Load mA                      | V<br>± %     |          |       |       |    |   |   |   |   |   |    |
| Secondary Voltage<br>Load mA                      | V<br>± %     |          |       |       |    |   |   |   |   |   |    |
| Secondary Voltage<br>Load mA                      | V<br>± %     |          |       |       |    |   |   |   |   |   |    |
| Ripple Voltage<br>Load 300 mA (PK-PK)             | 2V<br>max    | 1.2      | 1.2   | 1.2   |    |   |   |   |   |   |    |
| Hi-Pot Test<br>3 mA for<br>3Sec.                  | Pri. to Sec. | 2K VAC   | OK    | OK    | OK |   |   |   |   |   |    |
|   | Pri. to Core | 2K VAC   | OK    | OK    | OK |   |   |   |   |   |    |
|   | Sec. to Core | 1.5K VAC | OK    | OK    | OK |   |   |   |   |   |    |

Temperature Rise: 70°C MAX measured By Resistance Method (Primary Winding)

Core Film: SPLIT

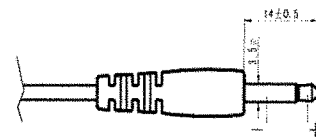
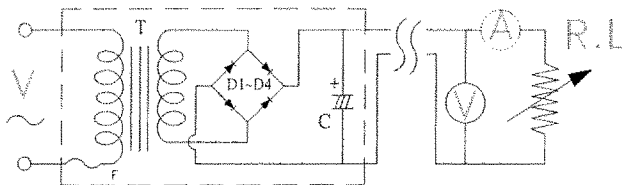
Core : EI-28

Testing Circuit:

1000uF/16V

Output Plug Drawing:

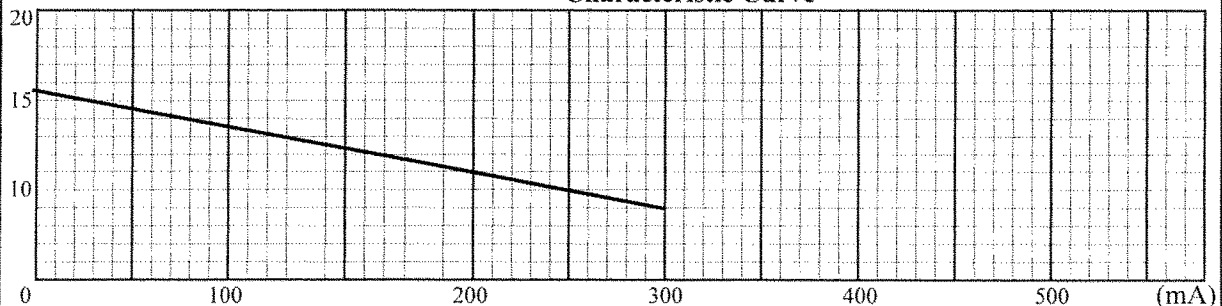
PLUG:3.5\*14mm



Output conductor length: 6 ft min (AWG#24)

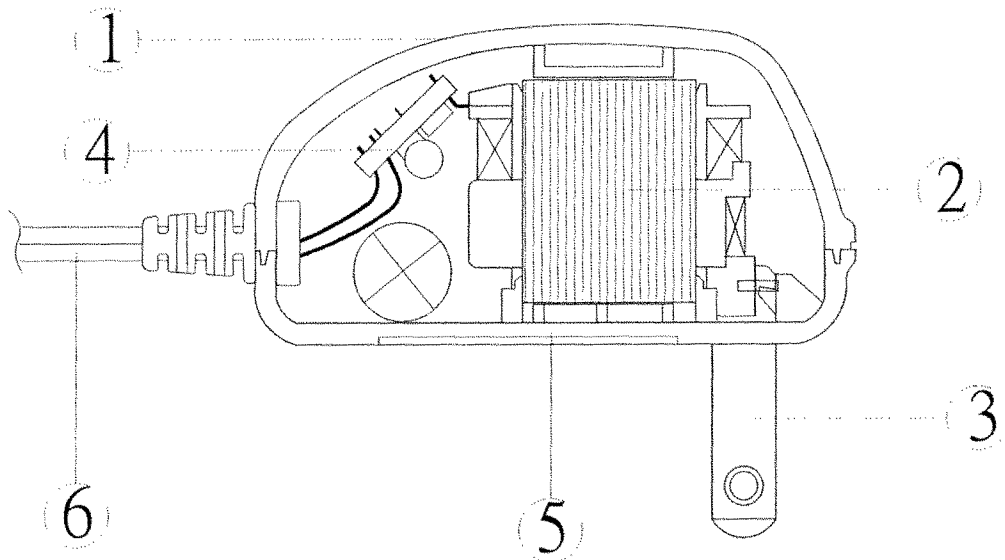
Input conductor length: ft min (AWG# )

(V) **Characteristic Curve**



## AC Adaptor Specifications

### Internal Construction Drawing and Parts List (Unit: Set or EA)

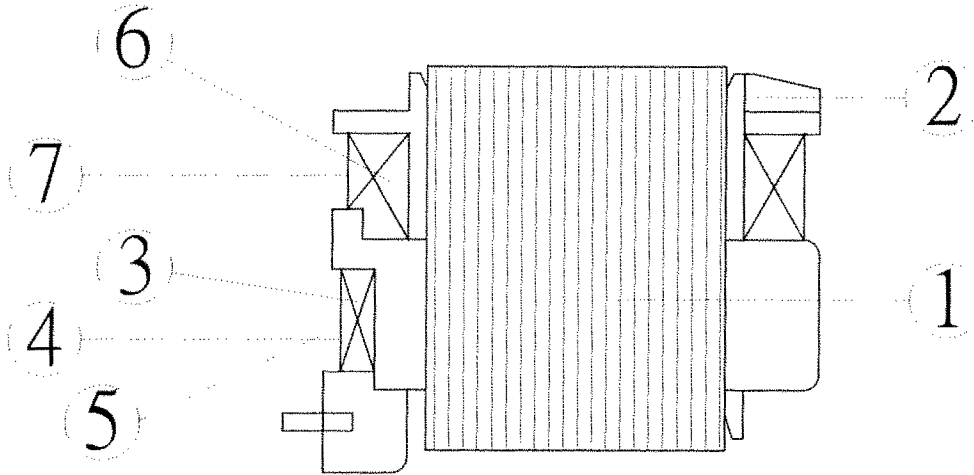


| Part Name                             | Specification             | Q'ty |
|---------------------------------------|---------------------------|------|
| 1. Enclosure                          | Noryl SE1 94V-0 105°C     |      |
|                                       | Noryl SE-100 94V-0 95°C   |      |
|                                       | Noryl PX1700 94V-0 95°C   |      |
|                                       | 940(f1) 94V-0 130°C       |      |
| 2. Transformer                        | EI-28                     | 1    |
| 3. Blade                              | Ni plated brass           | 2    |
| <b>4. Print Wiring Board Assembly</b> |                           |      |
| Print Wiring Board                    | 04V0 94V-0 130°C          | 1    |
|                                       | 11 94V-0 105°C            |      |
|                                       | 13 94V-0 130°C            |      |
|                                       | BF-3 94V-0 130°C          |      |
| Diode                                 | 1A 400-700V IN4004-IN4007 | 4    |
| Capacitor                             | 1000uF 16V 85°C           | 1    |
| 5. Name Plate                         | Polyester Film            | 1    |
| 6. Output Cord                        | AWG# 24 6FT min           | 1    |



# AC Adaptor Specifications

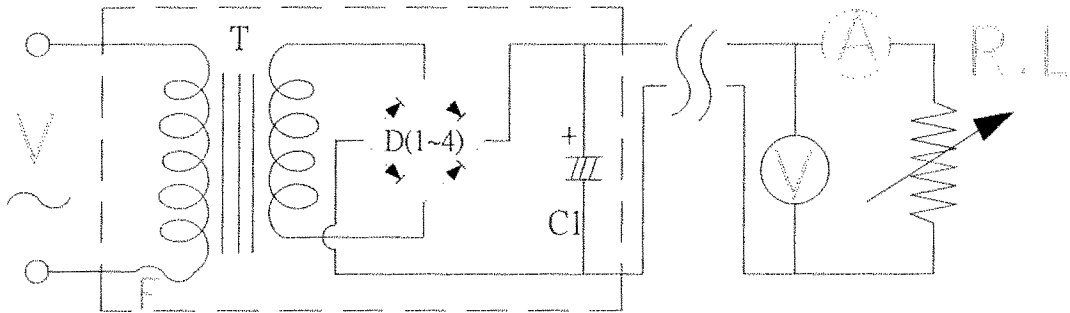
## Construction Drawing and Details of Transformer



| Part Name                  | Material & Type                   | Spec or Q'ty      |
|----------------------------|-----------------------------------|-------------------|
| 1. Core                    | Silicon Steel                     | 0.5mm             |
| 2. Bobbin                  | Polybutylene Terephthalate 1403G6 | 0.71mm            |
|                            | PETP(QMFZ2) FR-530, FR530L        |                   |
|                            | Nylon 101L                        |                   |
| 3. Primary Winding         | Polyurethane Enameled Copper wire | mm<br>turn<br>ohm |
| 4. Primary Outer Winding   | Mylar Tape                        | 0.025mmx2T        |
| 5. Thermal Fuse            | M30 2A 125°C 250V AC              | 1PC               |
| 6. Secondary Winding       | Polyurethane Enameled Copper Wire | mm<br>turn<br>ohm |
| 7. Secondary Outer Winding | Mylar Tape                        | 0.025mmx2T        |

## AC Adaptor Specifications

### Circuit Diagram

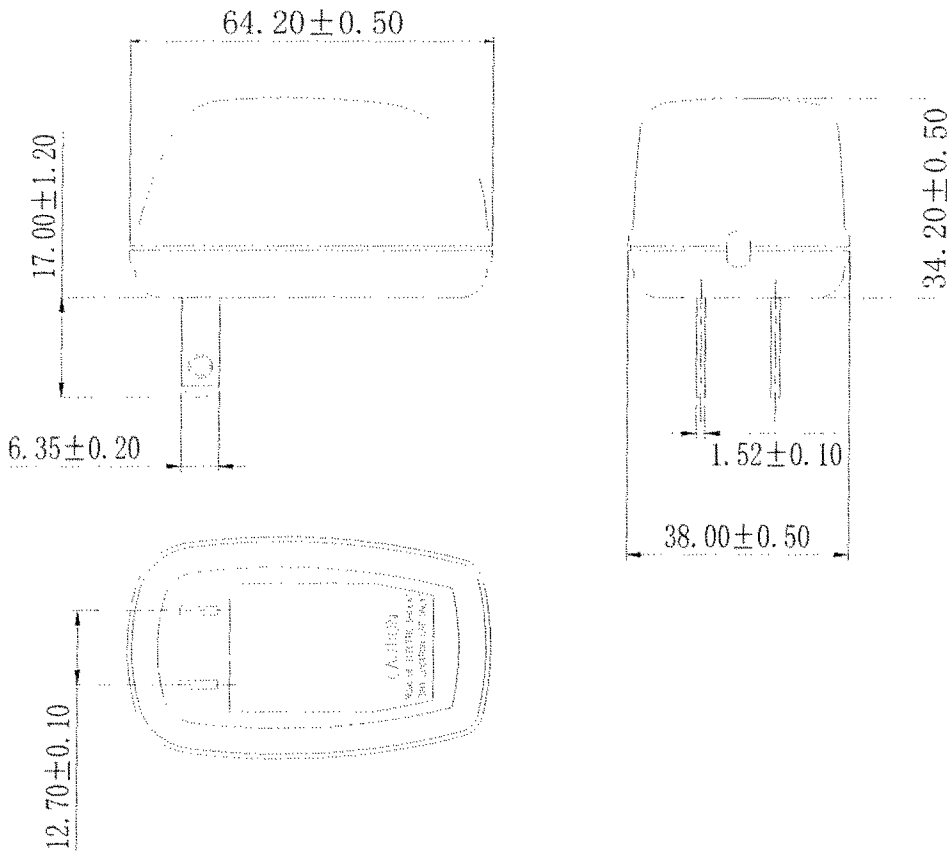


| Symbol | Part Name   | Note                      |
|--------|-------------|---------------------------|
| T      | Transformer | EI-28                     |
| D(1~4) | Diode       | 1A 400-700V IN4004-IN4007 |
| C1     | Capacitor   | 1000uF 16V 85°C           |
| F      | Thermal     | 125°C 2A 250V             |



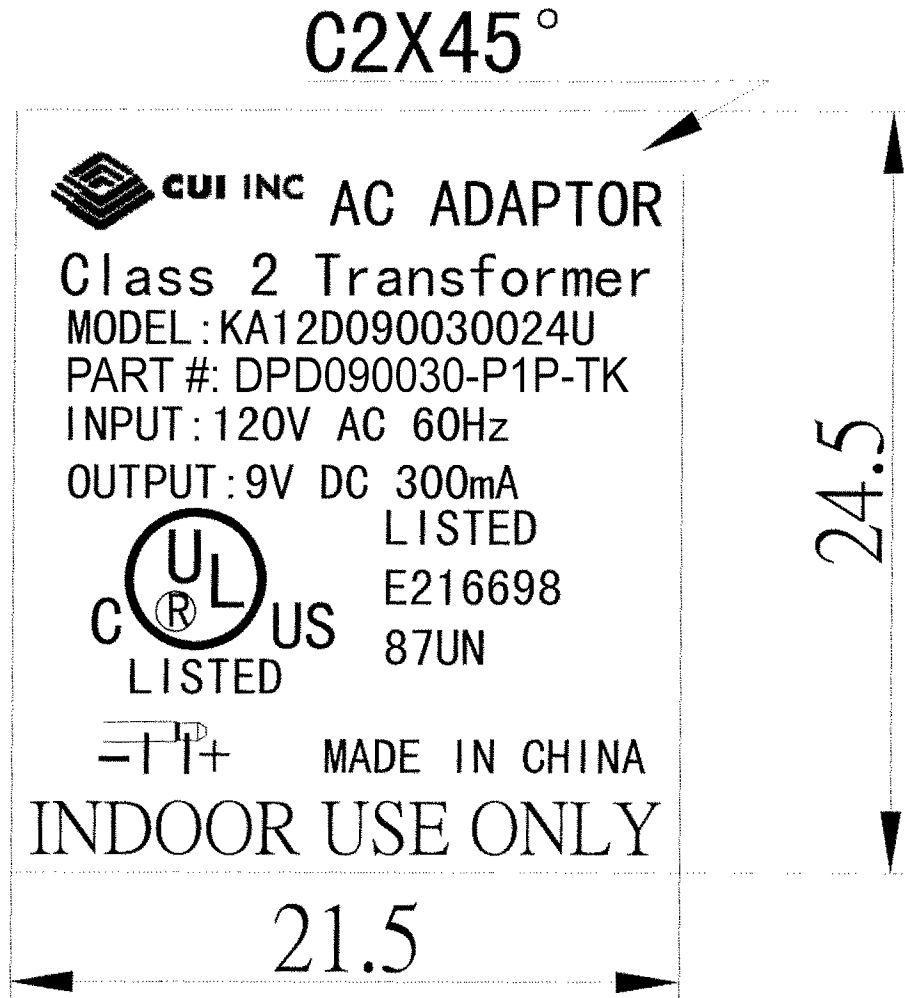
## DC Adaptor Specifications

### Appearance Drawing (Unit:mm)



## AC Adaptor Specifications

### Dimension of Nameplate (Unit:mm)



Material: Polyester Film

T: 0.25mm